



The Future of Homeless Services in Portland



Health & Human Services Committee Meeting & Public Hearing

November 27, 2018

This presentation and ongoing conversations include preliminary information on the homeless services center relocation project. The information includes draft financial assessments for the City and its potential partners. No final decisions have been made at this point. This information is solely intended for discussion purposes only.

1,821 Clients

Number of unduplicated clients during the time period of Oct 3, 2017 - Oct 3, 2018

286 are 55 & Older

Average of 200 a night = 160 male and 40 female.

Combination of Low Barrier HSC + Specialty Beds

Partnership with Avesta Housing & The Opportunity Alliance

Up to 150 low barrier beds on one site

+

Specialty Beds

Potential Specialty Beds Exclusively for OSS Clients

Avesta Housing

- 15 Unit Senior Assessment Center
- 36 Unit Assisted Living Level IV Private Non-Medical Institution facility (PNMI)
- 30 Unit Housing First property for seniors

Opportunity Alliance

- 15 Units for Clients with Mental Illness

Information for modeling purposes only

Avesta Housing Specialty Program

15 Bed Assessment Center - This would be a temporary (up to 14 days) residential program. Individuals would enter this program and would then be assessed for appropriate placement.

36 Unit Assisted Living Facility - This would be a traditional Assisted Living Facility where residents receive assistance with Activities of Daily Living (ADL's) including dressing, bathing, ambulation, medication management, etc.

30 Unit Housing First Development - This would be similar to Avesta's other three Housing First Developments: Huston Commons, Florence House and Logan Place. Each of these developments has housed chronically homeless individuals.

Opportunity Alliance's Specialty Mental Health Residential Treatment Program

In partnership with Community Housing of Maine (CHOM)

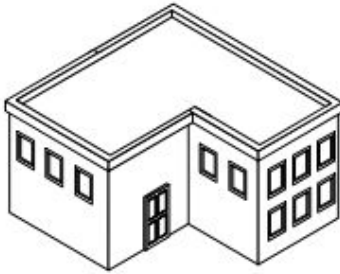
- trauma informed treatment and support services to homeless adults living with a major mental illness and who may also have a substance use disorder
- OA will work with City staff to identify program participants

Program services and strategies will include:

- Outreach services
- Supportive and supervisory services in a residential setting
- Ongoing care coordination
- Mental health and substance use treatment
- The development of independent living skills and a permanent housing plan
- Referrals to community resources (e.g. primary care, mental health and substance use services, peer recovery programs, support groups, educational and employment resources, etc.)

Financial Models

**150 Bed
Emergency Shelter**



\$4.5 Million

**Avesta
Specialty Site**



\$TBD

**Opportunity Alliance
Specialty Site**



\$TBD

Policy Guidance

Staff would like to recommend that as we are in the process of deciding where and how to locate a new service center, that the Council take a look at long-standing policies regarding local and state guidelines for shelter eligibility and responsibility.